

# Purple Top and Beet Leafhopper



See also: <http://www.potatoes.com/research.cfm>

## **Foliar Symptoms**



Leaves of infected plants turn purple and curl. Infected plants may die early.



Nodes swell and turn purplish, and axial buds elongate.



Aerial tubers may form on the stems.

---

## **Causal Agent**

- Name:** Columbia Basin Purple Top Phytoplasma (a.k.a. BLTVA)  
**Transmitted by:** Beet leafhopper (see reverse of this card)  
**Hosts:** Beet leafhopper, various weeds, potatoes, tomatoes, various vegetables  
**Other info:** Disease is transmitted mostly in early season.

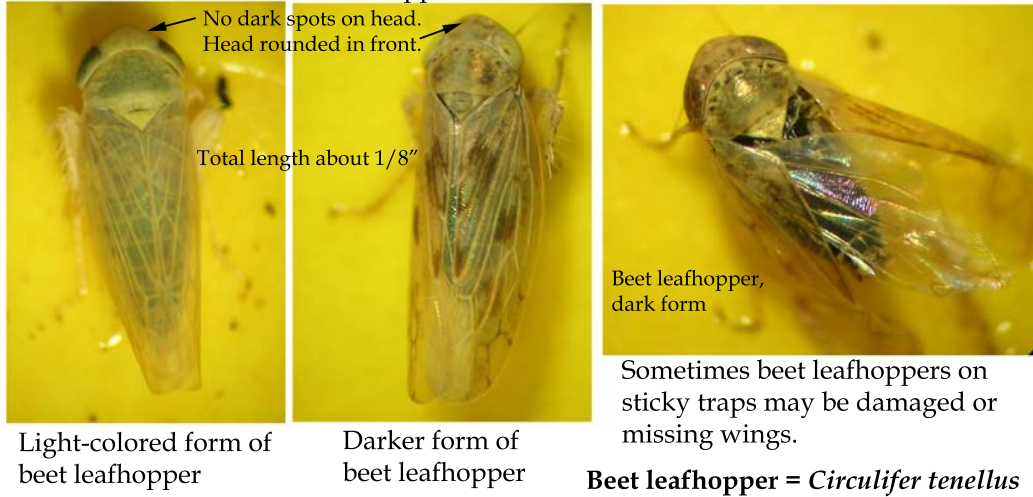
# Purple Top and Beet Leafhopper

See also: <http://www.potatoes.com/research.cfm>

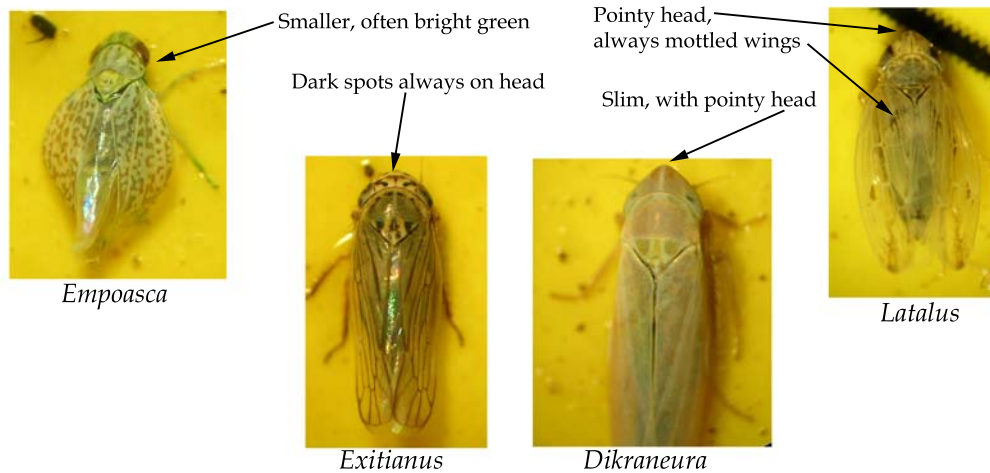


## Leafhopper Identification on Yellow Sticky Traps

Beet Leafhopper Comes in Two Color Forms



## Other Leafhoppers, Which Do Not Transmit Purple Top



### Trapping suggestions:

1. Use 3X5" or 4X6" yellow sticky card traps.
2. Place traps near potato fields, among weeds, away from dusty roads.
3. Mount cards about 3-4" above ground.
4. Check traps regularly, replace at least weekly.
5. May and June are the most important months.

